



BIOLOGICAL MICROSCOPE

QualiBM-100i

Biological Microscope

QualiBM-100i

The QualiBM-100i Biological Microscope is designed for daily use in medical, clinical, pathology, and biological applications. It features a sleek and durable construction with intuitive ergonomics and a high-efficiency heat sink system that keeps the unit cool during extended operation. Its solid, reinforced frame—from arm to base—offers excellent vibration resistance, ensuring stability and long-term reliability.

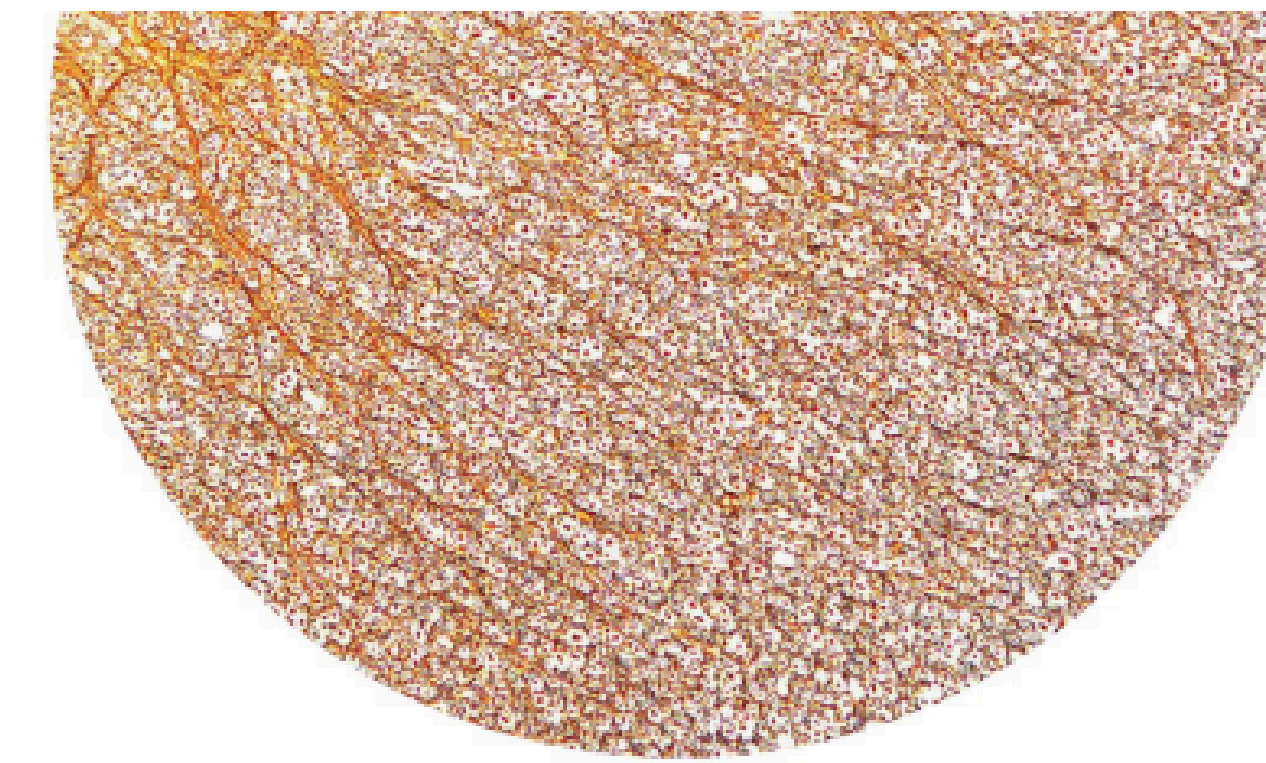
Equipped with the advanced UCIS universal infinity-corrected optical system, the QualiBM-100i minimizes chromatic aberration and field curvature, delivering sharp, high-contrast images with minimal glare. The high numerical aperture objectives support a range of techniques including bright field, phase contrast, darkfield, and polarization. Whether used with an eyepiece or paired with a digital camera, the system offers outstanding image clarity and seamless accessory integration.



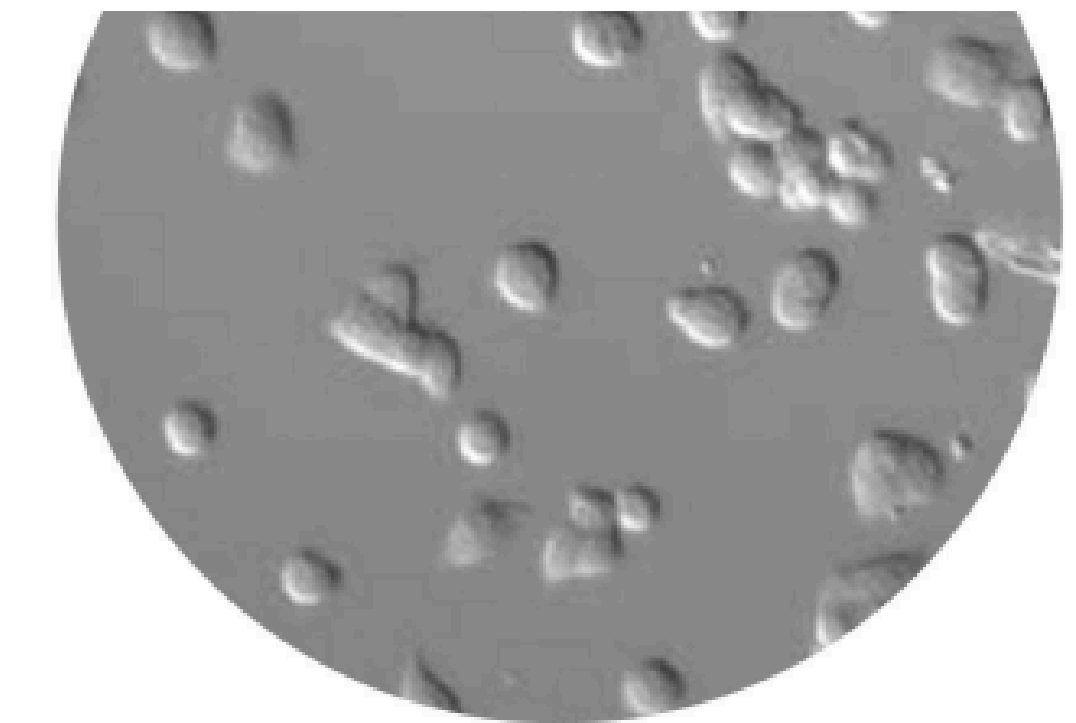
FEATURES/ADVANTAGES

Advanced Objectives

Equipped with UCIS Infinity Achromatic Optics, the high-NA objectives deliver flat, high-resolution images across the full field of view with minimal distortion.



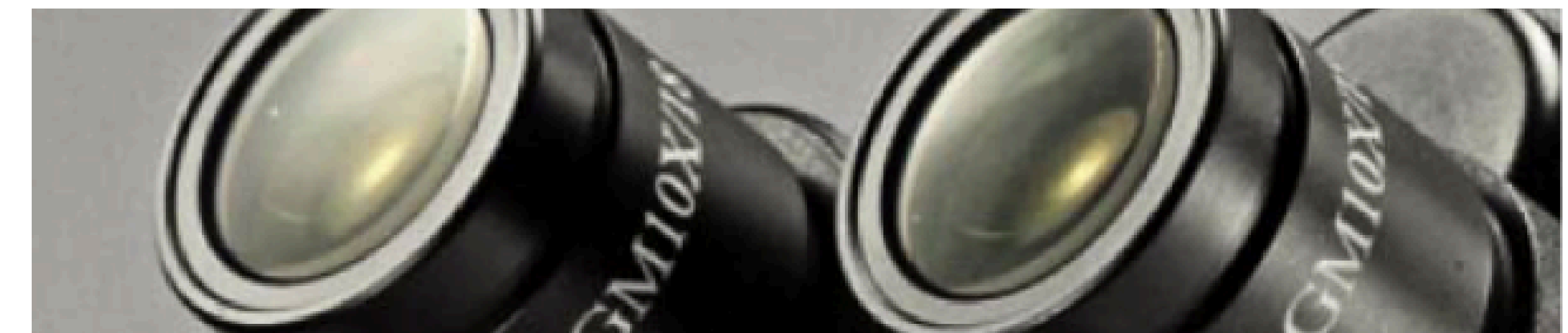
Brightfield



Phase-contrast

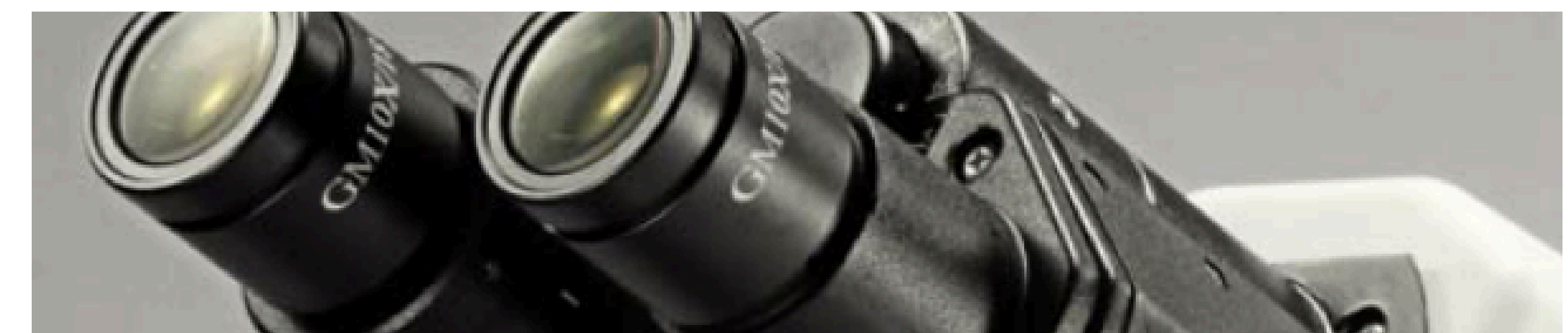
10X High-Eyepoint Eyepieces

Features 21mm high-eyepoint eyepieces with a wide $\Phi 18\text{mm}$ field of view, adjustable diopter, and optional eye shades for user comfort.



Ergonomic Viewing Tube

Inclined at 30° for natural posture during use. Offers 52–74mm adjustable interpupillary distance and a 360° rotatable design for flexible positioning.



FEATURES/ADVANTAGES

Trinocular Tube

Integrated 50/50 light-splitting prism with high-quality coating ensures clear imaging. Easily connects with digital cameras and computers.



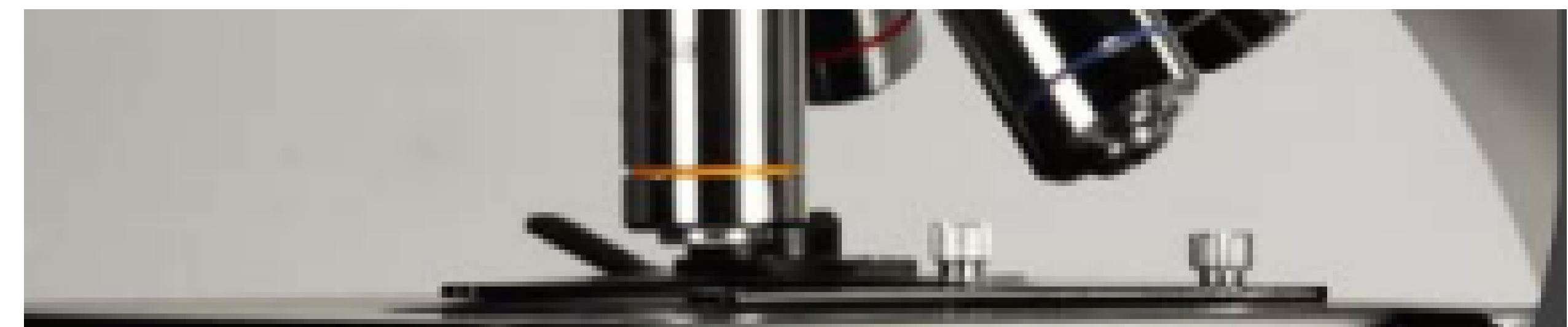
Abbe Condenser with Diaphragm Scale

NA 1.25 condenser with adjustable aperture iris diaphragm and PH slide socket. Height and center adjustable, with color-coded diaphragm scale markings for accurate alignment with objective lenses



Reversed Quadruple Nosepiece

Streamlined reversed design with four objective slots for quick magnification changes.



FEATURES/ADVANTAGES

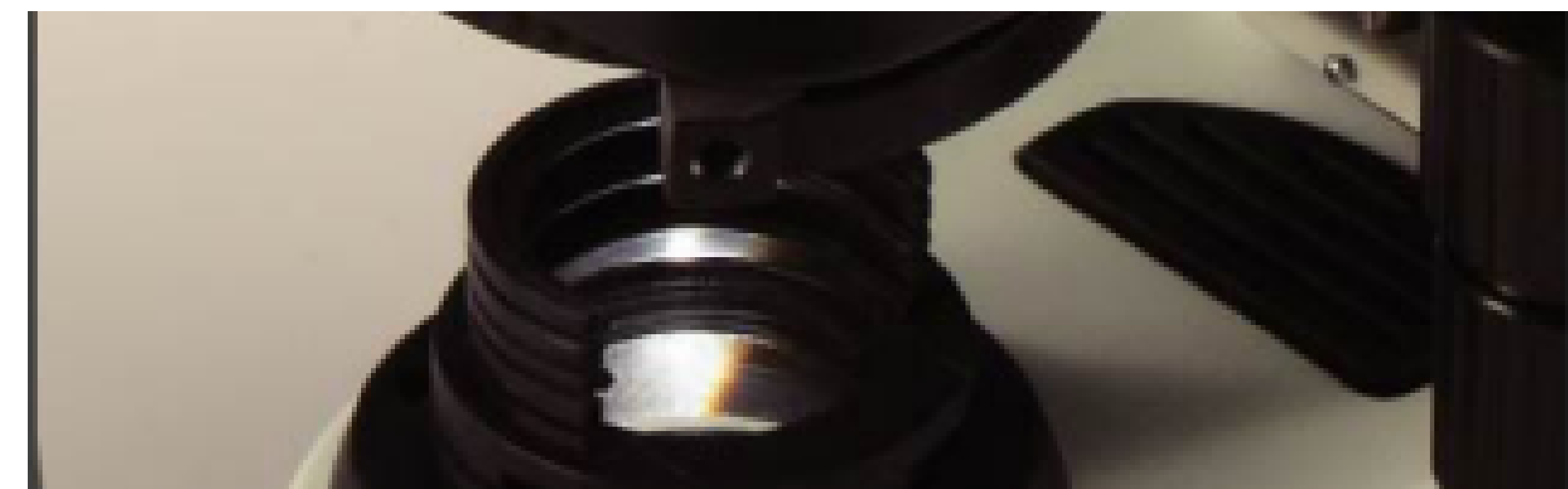
Ergonomic Co-axial Coarse and Fine Adjustment Knob

Low-positioned focusing knobs for comfort. Coarse focus offers 14mm/rotation (tension adjustable); fine focus provides 0.1mm/rotation with 1-micron precision on the left dial.



Bright, Even Illumination

Equipped with a 6V/20W halogen bulb and high-aperture aspherical lens in a standard Kohler setup. Optional Kohler with field diaphragm provides superior brightness and uniform lighting. Brightness control is easy to access and adjust.



Grasping Part

Built-in handle for convenient and stable transport of the microscope.



FEATURES/ADVANTAGES

Darkfield Condenser

Optional darkfield condenser allows for quick installation and enables high-contrast darkfield observation.

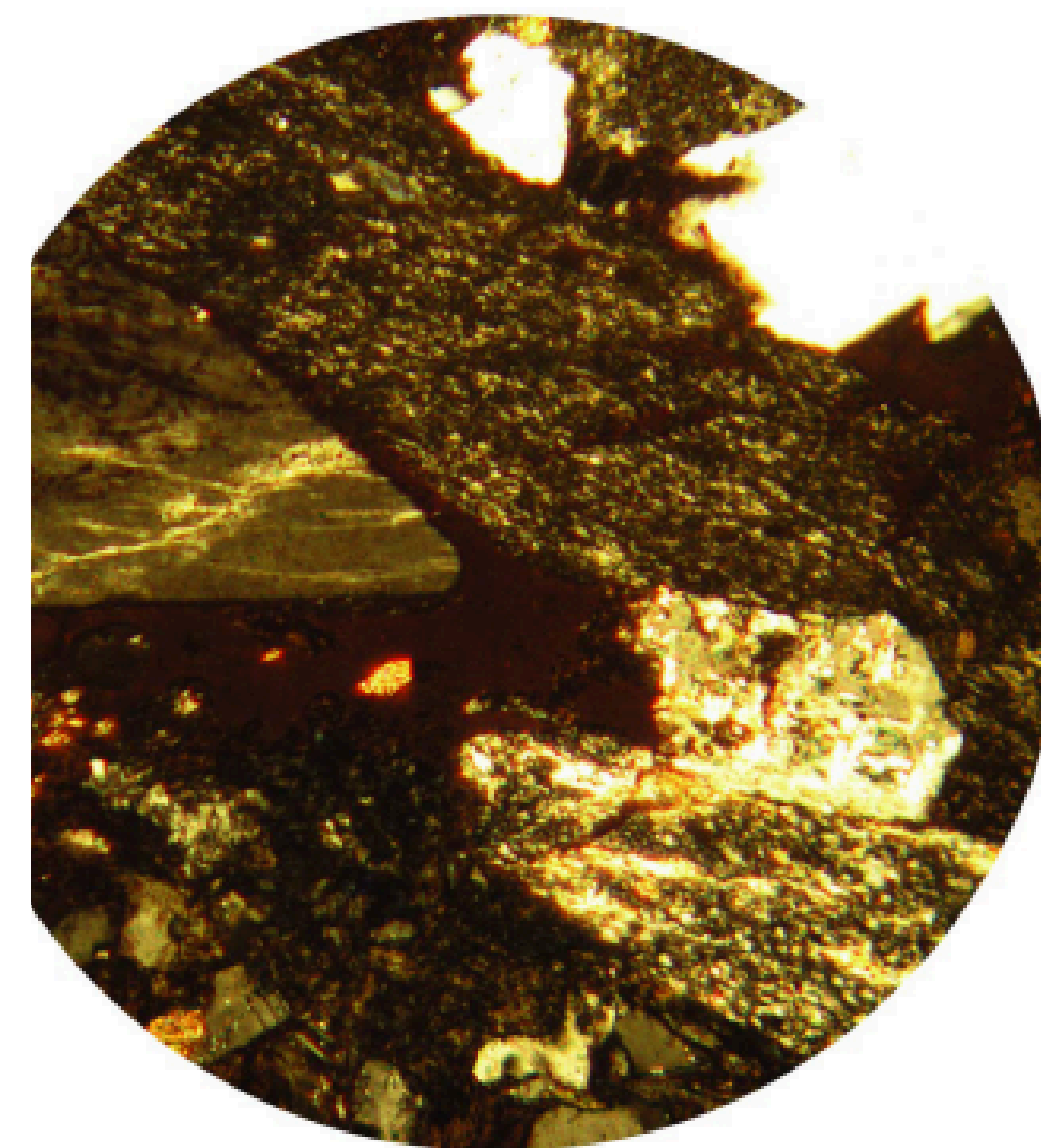


Easy Lamp Replacement

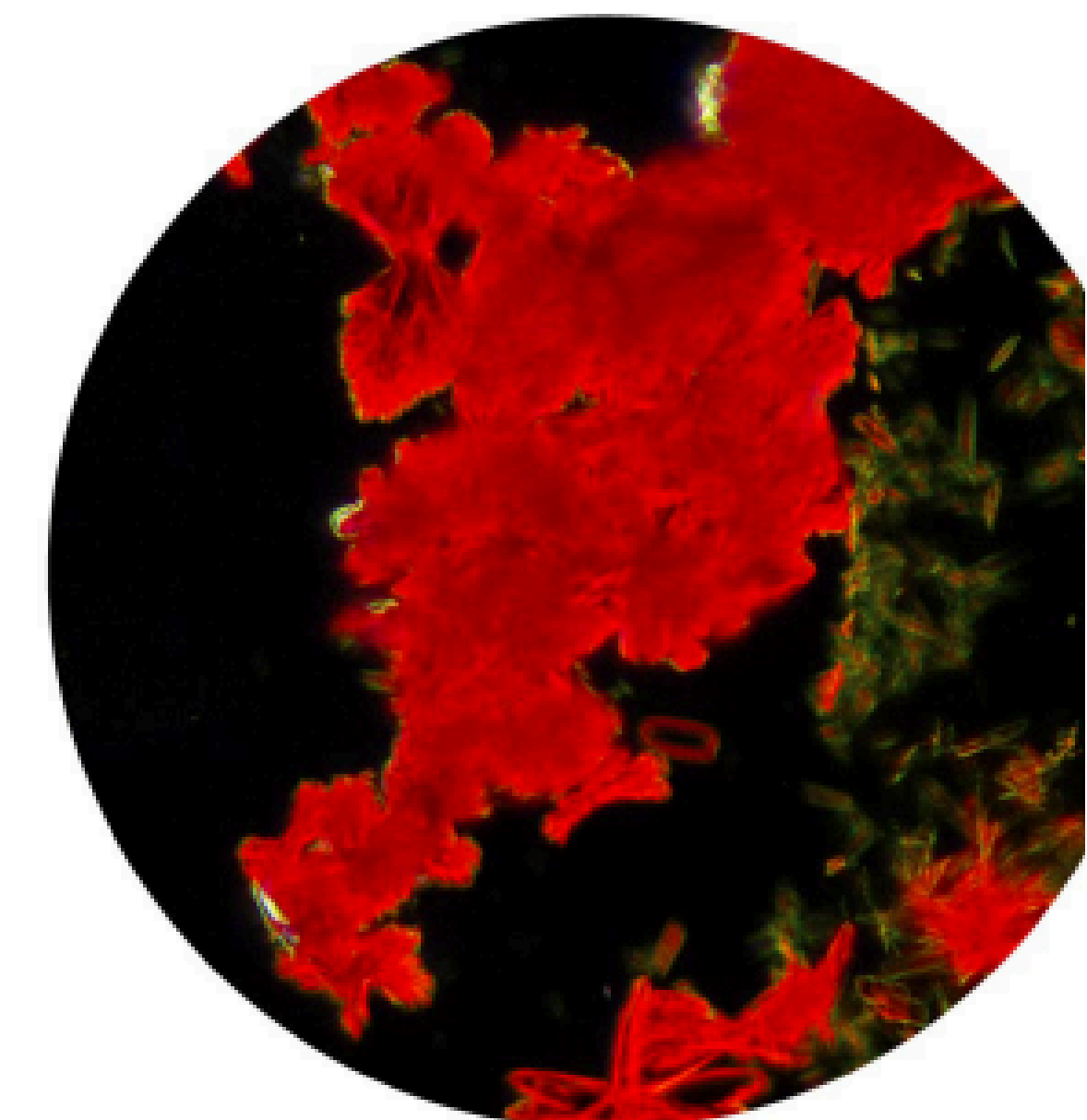
User-friendly lamp housing design allows quick bulb replacement with a simple grip-and-pull mechanism.

High-Efficiency Heat Sink

Advanced heat dissipation system keeps the surface temperature low—even after 24 hours of continuous use—ensuring user safety and prolonged device lifespan.



Polarization



Darkfie

TECHNICAL SPECIFICATIONS

PARTS	SPECIFICATIONS	QUALIBM- 102I	QUALIBM- 103I	ORDER NUMBER
Frame	One-piece construction from arm to base	●	●	100
Optics	UCIS Infinity Independent Achromatic Optical Design	●	●	100
Seidentopf Observation Tube	Trinocular Tube, Interpupillary distance 52-75mm, 30° inclined, trinocular light is split 20/80 by a high quality prism		●	MT3
	Trinocular Tube, Interpupillary distance 48-75mm, 30° inclined, trinocular light is split 20/80 by a high quality prism		○	MT3A
	40X/0.70 ∞/0.17, WD0.76 (Spring)	●	●	WB-X40A
	100X/1.25 ∞/0.17, WD0.12 (Spring,Oil)	●	●	WB-X100A
Plan Eyepiece	WF10X/18, High eye-point up to 21mm, diopter adjustable	●●	●●	E1018PB
	WF10X/20, High eye-point up to 21mm, diopter adjustable	○○	○○	E1020PB
	WF16X/14	○○	○○	E1614BA
	WF10X/18(Pointer), High eye-point up to 21mm, diopter adjustable	○	○	E1018GB
	WF10X/20(Pointer), High eye-point up to 21mm, diopter adjustable	○	○	E1020GB
	Reticule Eyepiece: CROSSWF10X/18	○	○	E1018RA
	Reticule Eyepiece: CROSSWF10X/20	○	○	E1020RB
Centering Telescope	CTE	○	○	WY2
Infinity Achromatic Objectives	4X/0.13 ∞/0.17, WD12.31	●	●	WB-X4A
	10X/0.30 ∞/0.17, WD6.75	●	●	WB-X10A
	40X/0.70 ∞/0.17, WD0.76 (Spring)	●	●	WB-X40A
	100X/1.25 ∞/0.17, WD0.12 (Spring,Oil)	●	●	WB-X100A

TECHNICAL SPECIFICATIONS

PARTS	SPECIFICATIONS	QUALIBM- 102I	QUALIBM- 103I	ORDER NUMBER
Infinity Achromatic Phase-Contrast Objectives (Positive or Negative)	PH 10X/0.30 ∞/0.17, WD6.75	○	○	WB-XPHp10A/WB-XPHn10A
	PH 40X/0.70 ∞/0.17, WD0.76 (Spring)	○	○	WB-XPHp40A/WB-XPHn40A
	PH 100X/1.25 ∞/0.17, WD0.12 (Spring,Oil)	○	○	WB-XPHp100A/WB-XPHn100A
Infinity Plan Objectives	Plan 4X/0.13 ∞/0.17, WD12.31	○	○	WB-P4A
	Plan 10X/0.30 ∞/0.17, WD4.00	○	○	WB-P10A
	Plan 20X/0.45 ∞/0.17, WD1.24	○	○	WB-P20A
	Plan 40X/0.70 ∞/0.17, WD0.29 (Spring)	○	○	WB-P40A
	Plan 60X/0.80 ∞/0.17, WD0.40 (Spring)	○	○	WB-P60A
	Plan 100X/1.25 ∞/0.17, WD0.09 (Spring,Oil)	○	○	WB-P100A
Infinity Plan Phase- Contrast Objectives	PH Plan 10X/0.30 ∞/0.17, WD4.00	○	○	WB-PPHp10A/WB-PPHn10A
	PH Plan 20X/0.45 ∞/0.17, WD1.24	○	○	WB-PPHp20A/WB-PPHn20A
	PH Plan 40X/0.70 ∞/0.17, WD0.29 (Spring)	○	○	WB-PPHp40A/WB-PPHn40A
	PH Plan 60X/0.80 ∞/0.17, WD0.40 (Spring)	○	○	WB-PPHp60A/WB-PPHn60A
	PH Plan 100X/1.25 ∞/0.17, WD0.09 (Spring,Oil)	○	○	WB-PPHp100A/WB-PPHn100A
Phase-Contrast Slide	10X PH	○	○	PCB-XPH10A
	40X PH	○	○	PCB-XPH40A
	100X PH	○	○	PCB-XPH100A

TECHNICAL SPECIFICATIONS

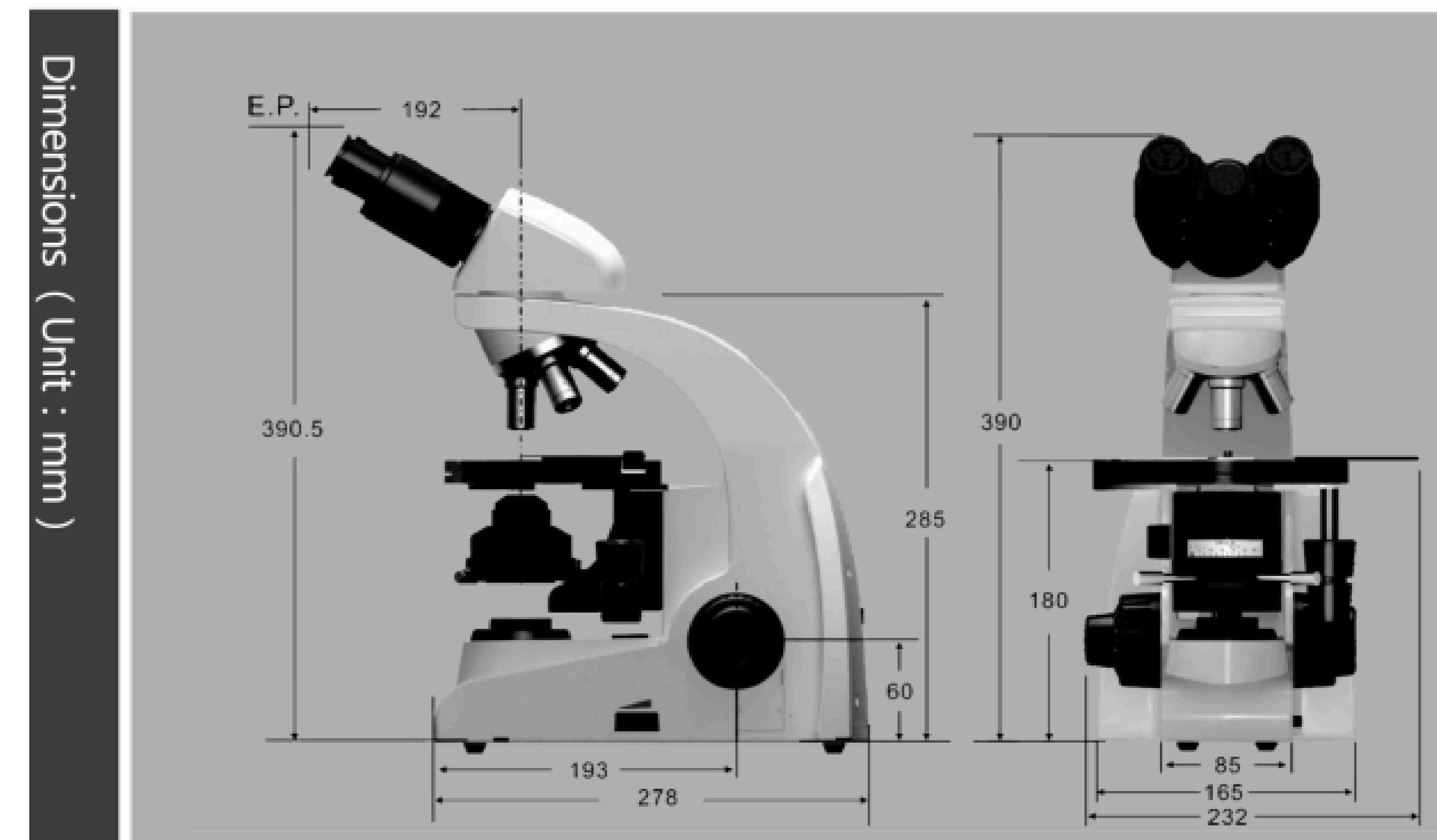
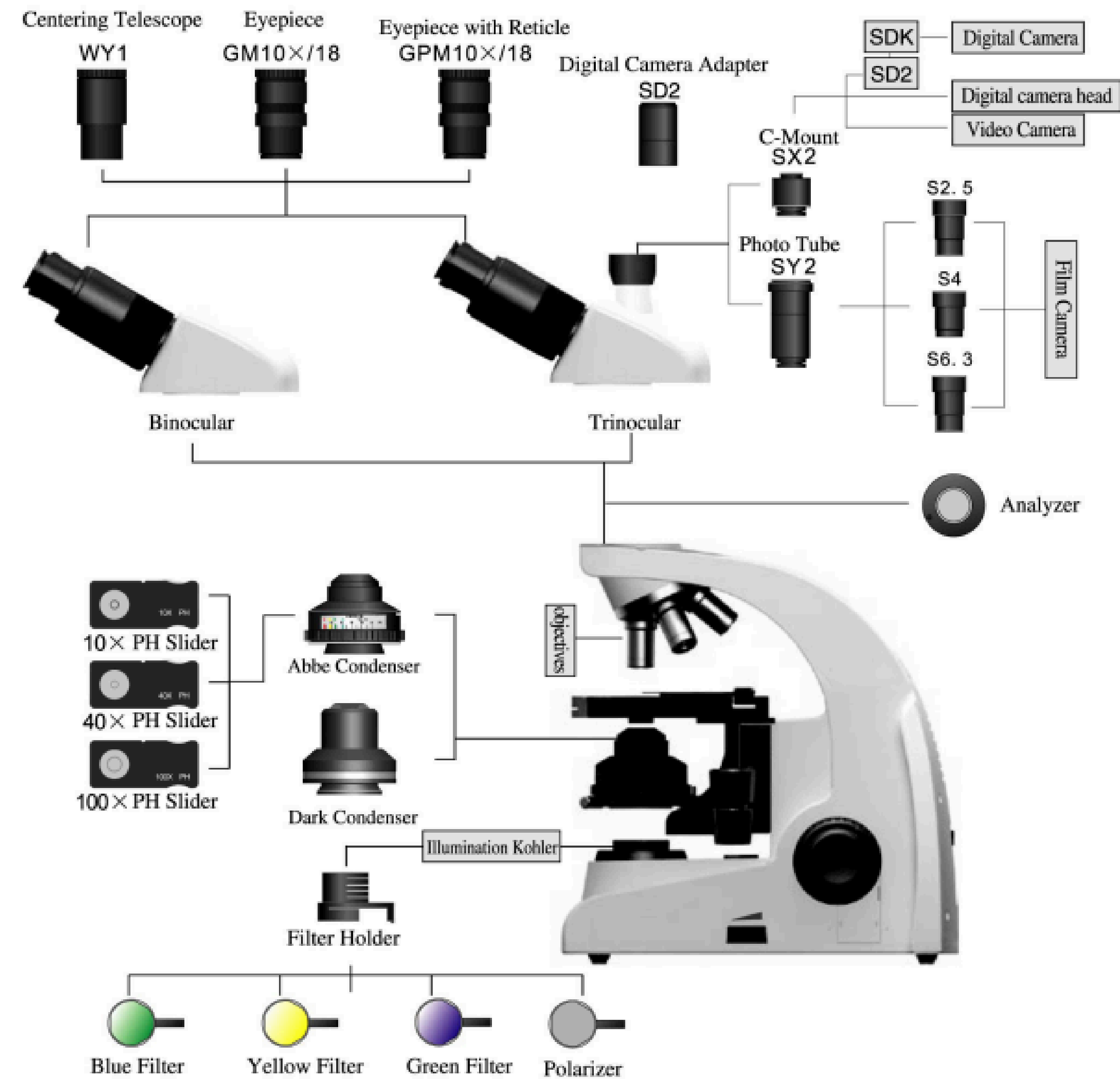
PARTS	SPECIFICATIONS	QUALIBM- 102I	QUALIBM- 103I	ORDER NUMBER
Condenser	Abbe condenser: NA 1.25, with iris diaphragm, with socket to accommodate PH-slide. Condenser center adjustable, color-coded diaphragm scale markings corresponded with the objectives of different powers	●	●	JG3
	Dark Condenser	○	○	JG10
Stage	Mechanical Stage: 156x138mm platform, with X/Y travel of 76x54mm by low-positioned X/Y coaxial control knob, with scale mark and specimen-slide clip, enough space to hold 2 specimen-slides	○	○	ZT2
	Mechanical Stage: 142x135mm platform, with X/Y travel of 76x52mm by low-positioned X/Y coaxial control knob, with scale mark and specimen-slide clip, enough space to hold 2 specimen-slides	●	●	ZT3
Revolving Nosepiece	Quadruple, inward facing	●	●	ZQ470
	Quintuple, inward facing	○	○	ZQ570
Illumination Kohler	No field diaphragm	●	●	KL2
	With field diaphragm	○	○	KL3
Electrical Parts	For Halogen Bulb Input: 100-240V ~0.5A, 47-63Hz, Output:6V 3.4A, Fuse:3.15A, 250V, F Φ5×20mm, Halogen Bulb Socket: G4. CE Certified	●	●	DQ3
	For LED	○	○	DQL1
C-Mount	SX2: 0.5X		○	SX2
	SX3: 1X		●	SX3
Digital Camera Adapter	SD2		○	SD2
Photo Tube	SY2		○	SY2

TECHNICAL SPECIFICATIONS

PARTS	SPECIFICATIONS	QUALIBM- 102I	QUALIBM- 103I	ORDER NUMBER
Photo Eyepiece	PE2.5X		○	S2.5
	PE4X		○	S4
	PE6.3X		○	S6.3
Filter	Blue	●	●	LA2-0011
	Green	○	○	LU2-0011
	Yellow	○	○	LH2-0011
	Grass Glass	○	○	LB2-0011
Filter Holder	(Attached to the Kohler) for more than one filter	○	○	LA1-0071
Polarization kits	Analyzer	○	○	PQ1
	Polarizer	○	○	PY1
Illumination Bulb	6V20W Osram Halogen Bulb	●	●	BZ-0022A
	3W LED Bulb	○	○	DQL1-1000
Immersion Oil	8ml	●	●	BZ-0027
Allen Screw Driver	Φ2mm	●	●	BZ2-0018
Power Line	1.8m, CE certified	●	●	BZ-0021
Package	Inner package: foam, plastic bag. Outer Package: Paper box	●	●	BZ3-0011A

Symbol Meaning: ● means standard, ○ means optional

TECHNICAL SPECIFICATIONS



Net weight of Standard Outfits: 6.7kg

Gorss Weight of Standard Outifts: 9.1kg



USA | CANADA | UAE | GCC | EU | INDIA | APAC | AFRICA | LATIN AMERICA

Connect with us

Contact our **QualiTeam** today to find out how we can help your organization **select the most suitable testing solution** for your application, requirements, and budget.

Qualitest USA (Corporate Sales Office)

Toll-Free: 1.877.884.TEST (8378) | Fax: 954.697.8211
E-mail: info@qualitest-inc.com
Address: 8201 Peters Rd., #1000,
Plantation, FL 33324, USA.

Qualitest KSA (Regional Office)

Tel: +966 11 500 6659
Address: Level 7, 3.09, District 3, King Abdullah
Financial District, Riyadh, Saudi Arabia

Qualitest Canada & International

Tel: +1.905.944.9825 | Fax: +1.905.944.0304
E-mail: sales@qualitest-inc.com
Address: 70 East Beaver Creek Rd., #9, Richmond Hill,
Ontario L4B 3B2, Canada.

Qualitest Singapore (ASIA PACIFIC Regional Office)

Tel: +65 6393 5480 | E-mail: singapore@qualitest-inc.com
Address: 50 Raffles Place, Singapore Land Tower,
Level 46, Singapore, 048623.

Qualitest Latin America (Mexico and LATAM Region)

E-mail: ventas@qualitest-inc.com

Qualitest Indonesia (Representative Office)

Tel: +62 21 2985 9522 | Fax: +62 21 2985 9889
E-mail: indonesia@qualitest-inc.com
Address: One Pacific Place Level 11, Jl. Jend. Sudirman,
Kav. 52-53, SCBD Area, Jakarta 12190, Indonesia.

Qualitest FZE (Regional GCC/ME Office)

Tel: +971 4 8819252 | Fax: +971 4 8819262
Email: gcc@qualitest-inc.com
Address: Jafza One, BB 1610, Jebel Ali Free Zone,
PO Box 261440, Dubai, UAE.

Qualitest India

E-mail: india@qualitest-inc.com
Address: 15th Floor, Dev Corpora, Pokhran Road No.1,
Eastern Express Highway, Thane, Maharashtra,
Mumbai, 400601, India

